

# How to Sign Up to the Study:

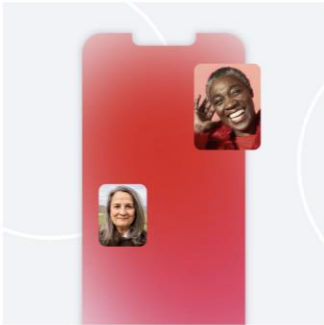
To use the MyMPN Voice App, you must first enrol in the study. Signing up to the study is simple and can be done online on the Sanius MPN website, or via the app once downloaded. The Sanius team will review your application. Once done, they will then confirm your registration and you'll receive access to the app, along with a confirmation email from the Sanius team.

## Option 1: Website Sign Up

- 1. Visit [saniushealth.com/mpn/](https://saniushealth.com/mpn/) or scan the QR code on the right.
- 2. Read the study protocol and the information on the site.
- 3. Register interest to sign up to the study.
- 4. A member of the sanius health team will reach out to you by email and help you onboard.

## Option 2: Sign up through the app

- 1. Download 'MyMPN Voice' from the play store or app store.
- 2. Complete the registration steps (shown on the next slide)
- 3. After registering, you will be sent an email to fill out a SAR form and Study Consent form. Please fill these out and wait for the Sanius team to review your information.
- 4. Once approved, you'll gain access to the app.



Arrange to speak to our team to learn more about the Study.



Read through the study documents and onboard online if you are interested in taking part.



Once onboarded, you will have access to the app. Please note, at this stage in the study, only patients with Myelofibrosis (MF) will be given a wearable device.

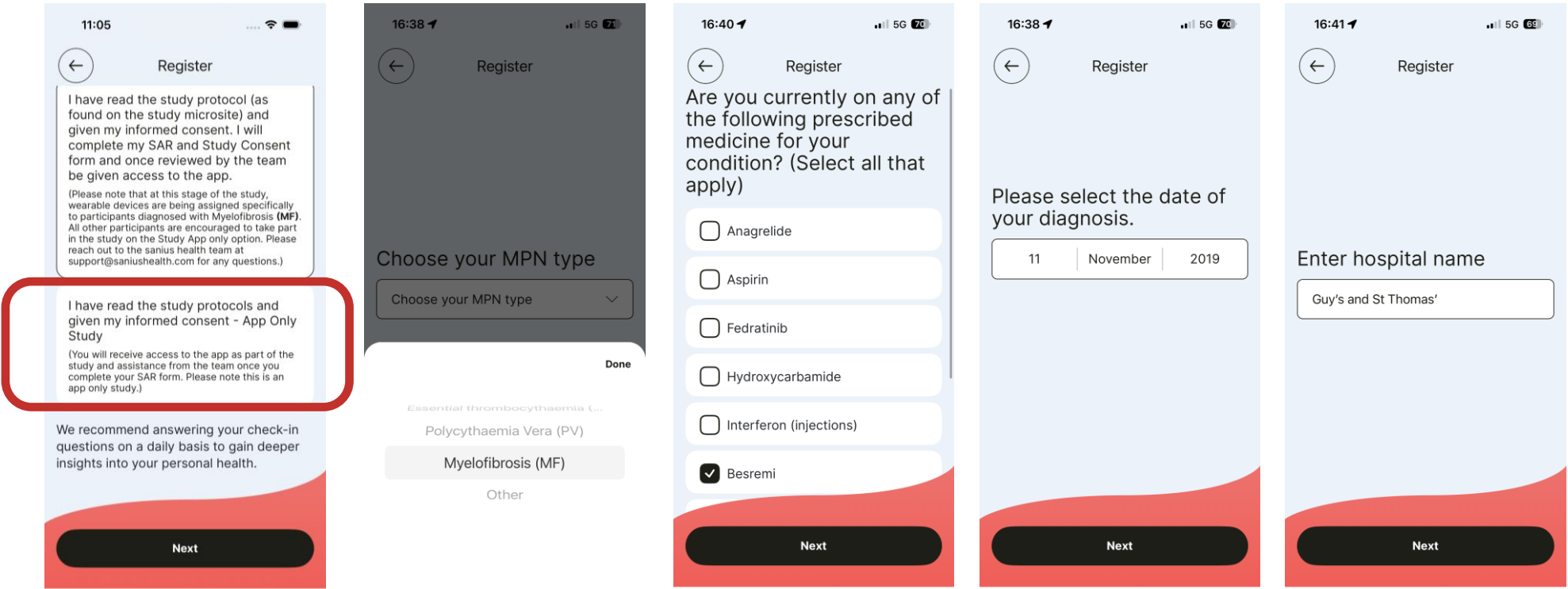
<https://saniushealth.com/mpn/>



Please note: The MyMPN Voice App will only work if you are signed up to the study. To gain more information or approval for the app, please email [support@saniushealth.com](mailto:support@saniushealth.com)

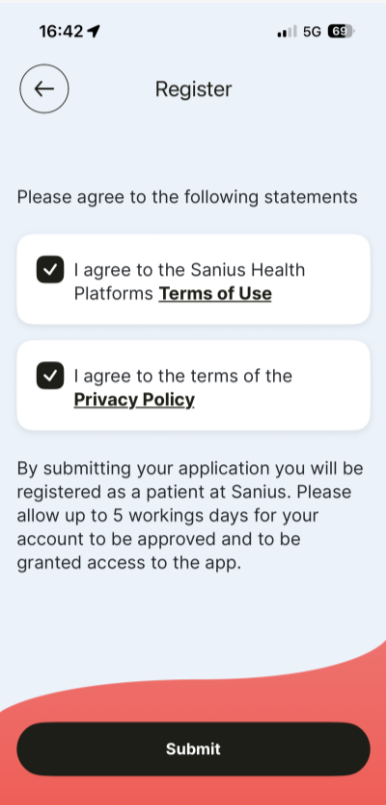
07 | Preview of Some Steps to Onboard (App)

What You'll See During App Registration:

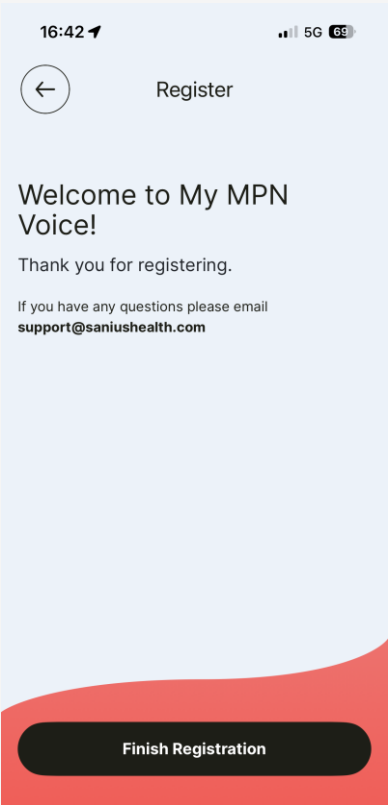


Select 'App Only Study' when registering to take part without a wearable device.

# Checking Your Account Approval Status:

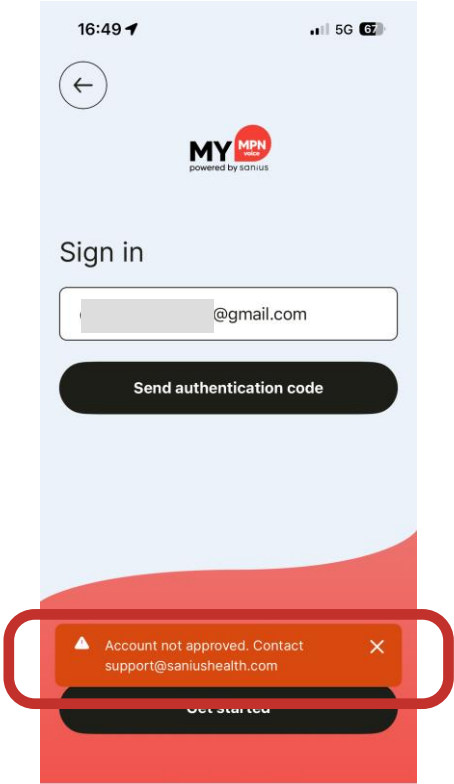


Click 'Agree to Terms' to complete your registration and submit your details.

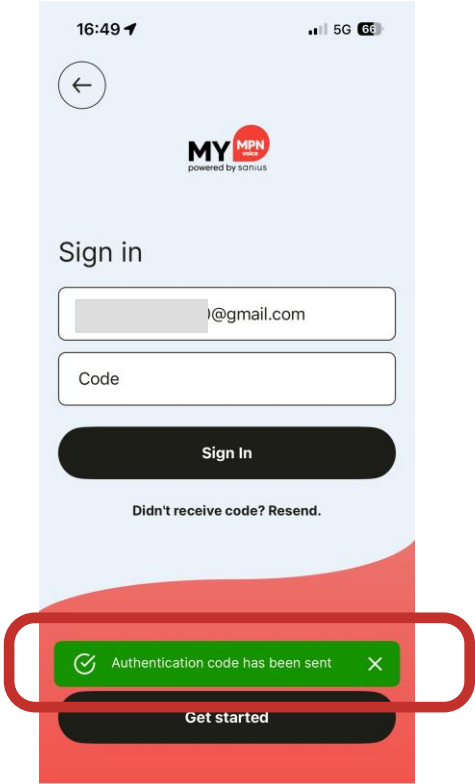


You will then see the confirmation screen above, showing that you have registered on the app.

For your account to move from pending (left) to approved (right), we will require you to consent details to a SAR form and study consent form that will be sent via email once you have finished registering on the app. Please allow the Sanius team sometime to review your application before you can gain access to the app. For any questions, please contact [support@saniushealth.com](mailto:support@saniushealth.com)



**Account not approved:** Your registration is still being reviewed by the team.



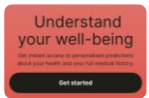
**Authentication code sent:** Your account has been approved for study and app use,, and you can now log in and use the app.

# Downloading MyMPN Voice App once you are enrolled on the study:

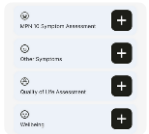
Joining the MPN app is quick and simple. Follow these steps to start tracking your health, staying connected, and support research that is improving care across the MPN community.



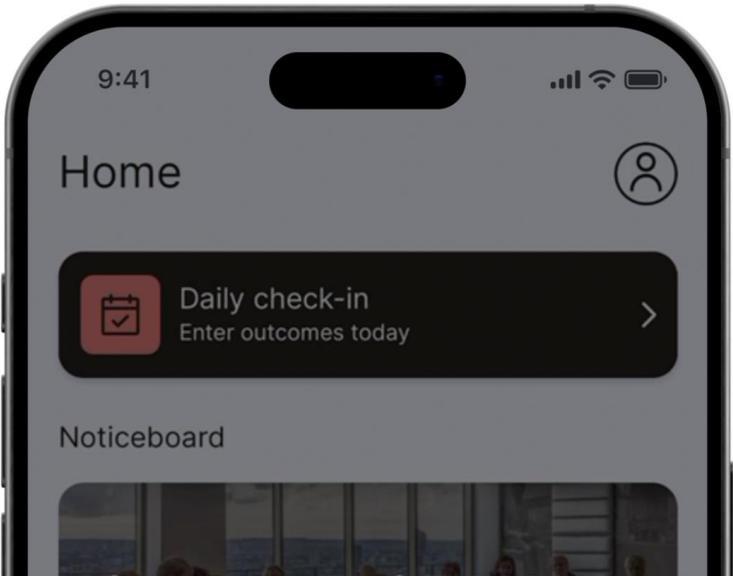
**Step 1 | Download the App:** Search “My MPN Voice” on the App Store or Google Play Store, then download it to your smartphone or tablet. The app is free and available to study participants



**Step 2 | Register and Onboard:** Once downloaded, please click on the ‘Get Started’ button and complete the registration in app. This will include providing consent. A member of the Sanius team will approve your access within 48 hours, and give you a call to walk you through the process and guide you further.



**Step 3 | Begin Tracking:** You can now start using the app to record your symptoms, medication, and wellbeing. You can also track your MPN10 symptoms. We recommend using the app daily, or minimum once a week.



[Click here](#)



[Click here](#)

Please note: The MyMPN Voice App will only work if you are signed up to the study. To gain more information or approval for the app, please email [support@saniushealth.com](mailto:support@saniushealth.com)